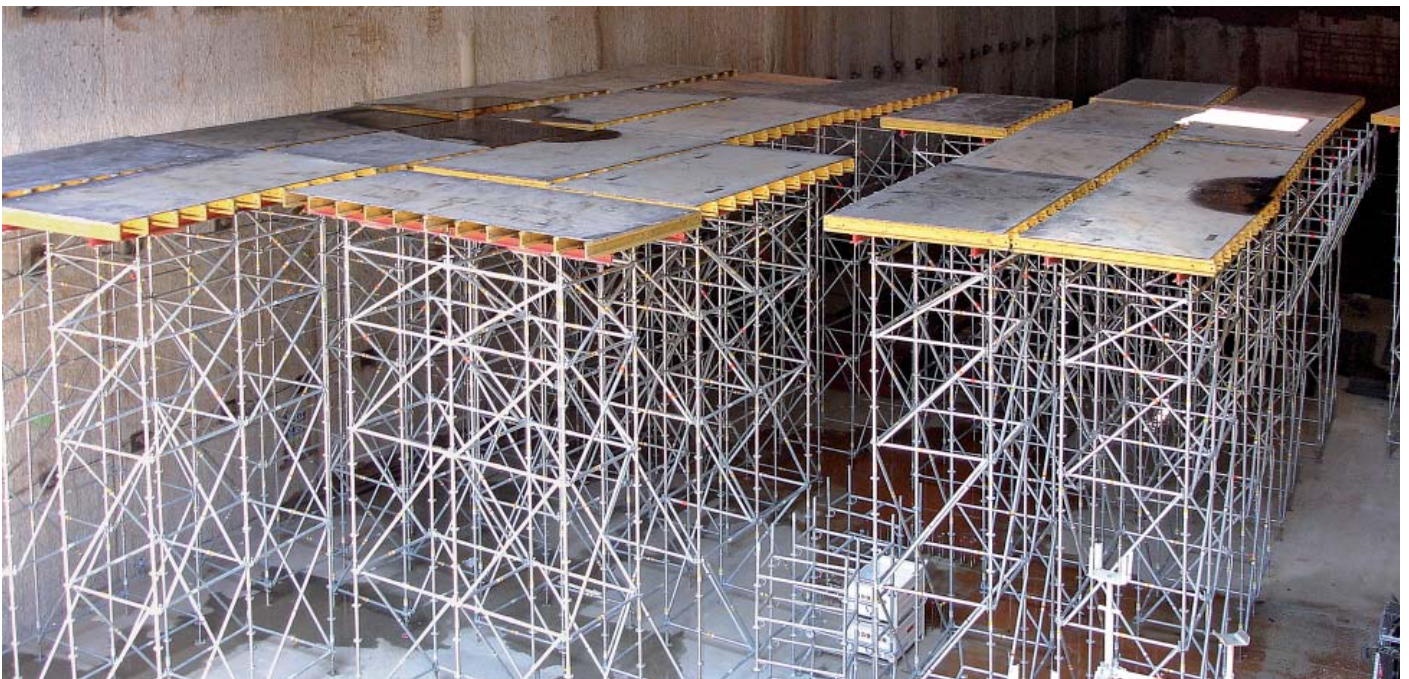


Alsina Table



ISO 9001

BUREAU VERITAS
Certification

Nº 7002938

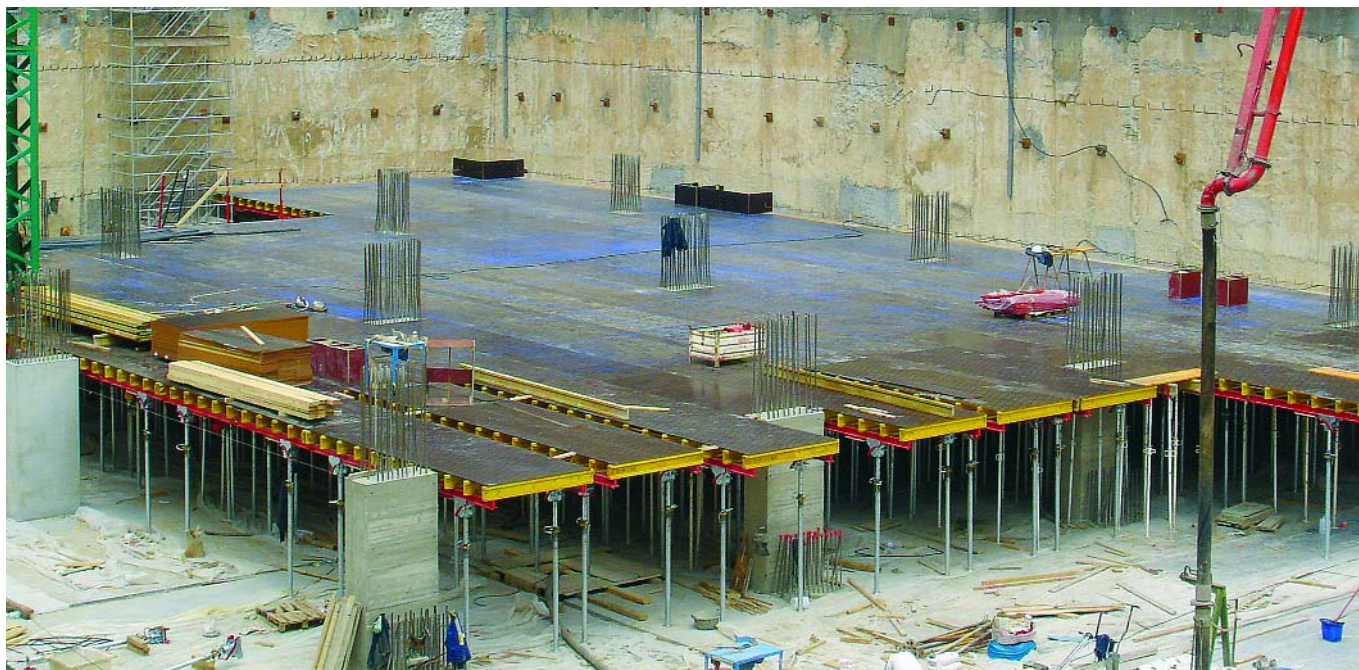


Encofrados J. Alsina, S.A.

Pol. Ind. Pla d'en Coll - Camí de la Font Freda, 1
08110 - Montcada i Reixac (Barcelona - Spain)
Tel. (+34) 935 753 000 - Fax (+34) 935 647 059
E-mail: alsina@alsina.com

www.alsina.com

ALSINA TABLE



► Compact design



The combination of metal girders (main beam) and HT-20 wood beam (distribution beam) joined together with support, provides a stable and compact table.

The standard modules based on 2 widths and 2 lengths, allow it to be transported using regular trucks.

The measurements of the unit allow for the easy adaptation to the size of the job.

► Versatile



The design of the Alsina Table system responds to different work requirements, providing several options:

FORMWORK SURFACE: Phenolic resin-coated plywood for fair-faced concrete or Alisan range of panels in the case of standard finish.

ALIGNING: Light shoring systems for heights or Post-shores for general solutions.

HEAD: fixed or folding for removal under slabs.

→ preassembled system for slabs

preassembled system for slabs, especially for large-scale projects and for surfaces where there is a regular distribution of columns.

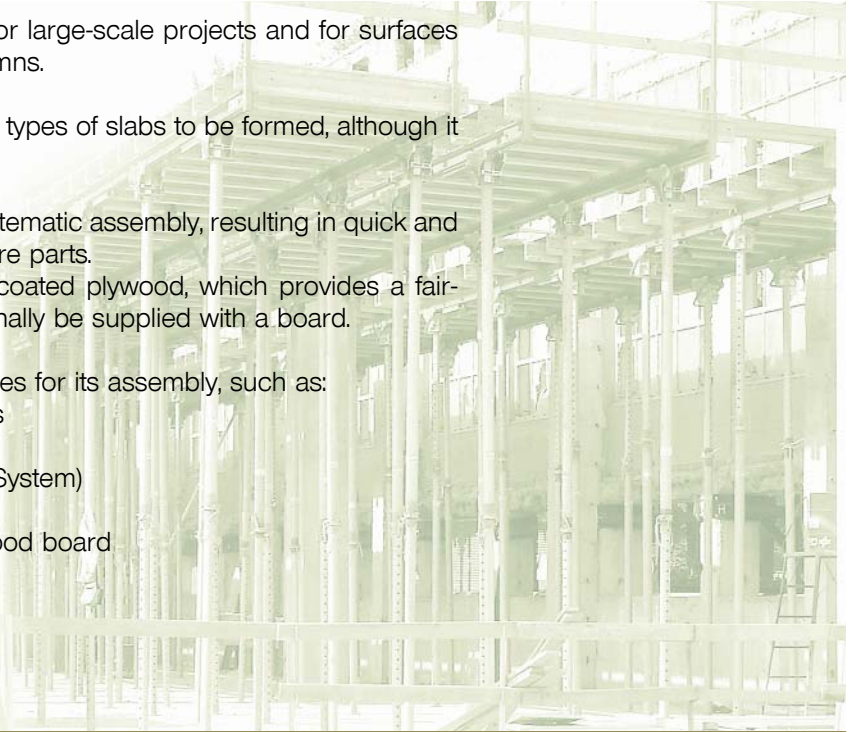
The Alsina Table formwork system allows all types of slabs to be formed, although it is especially designed for solid slabs.

The Alsina Table formwork system offers systematic assembly, resulting in quick and safe form removal and the use of fewer spare parts.

The formwork surface is of phenolic resin-coated plywood, which provides a fair-faced concrete finish. The system can optionally be supplied with a board.

The Alsina Table System includes accessories for its assembly, such as:

- Alisan or Europrop A3 post-shores
- Alsina Light Shoring System
- Alsipercha (Alsina Fall Prevention System)
- Alisan Panels range
- Alsina phenolic resin-coated plywood board
- Alispaly Side-shutter



▶ Quick horizontal movement



The Trolley, which has a hydraulic device, is designed to facilitate form removal tasks and the transition to the next concrete phase on the same floor without needing a crane in a quick, comfortable and safe way.

The Trolley can also be completely folded up, ideal for transport and storage on site. It is available with extensions for a slab height range of between 2.50 and 5.10 m.

▶ Easy vertical movement



The vertical transport C-hook allows transport, placement of post-shores and the positioning and removal of the table on site to be carried out quickly and reliably.

The C-hook has an automatic mechanism that moves the center of gravity based on the weight of the load transported.

The lower fork head can have its length and width regulated, facilitating the movement of the different modules of the Alsina Table systems.

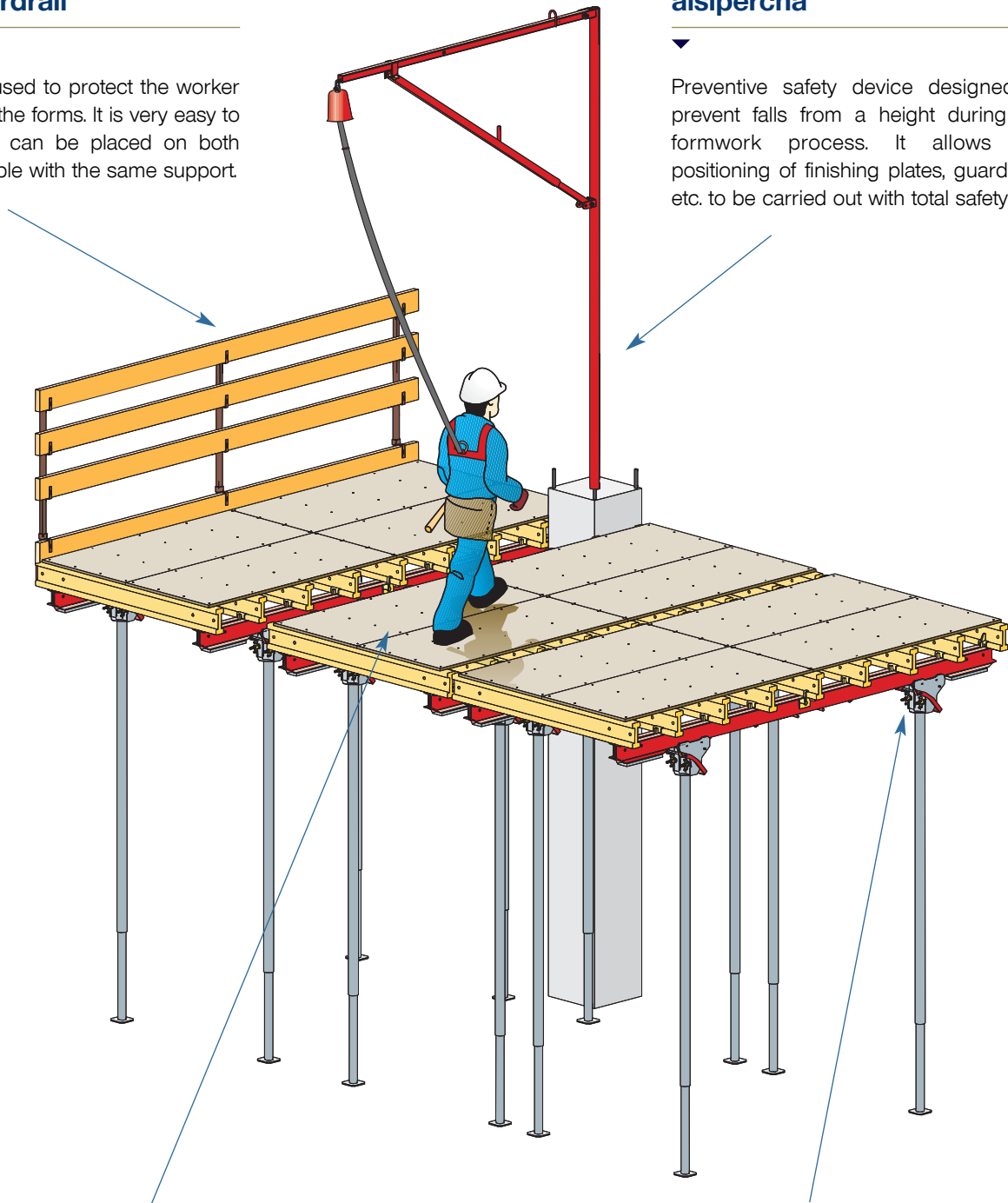
Properties of the Alsina Table System

safety guardrail

Safety railing used to protect the worker while setting up the forms. It is very easy to assemble and can be placed on both sides of the table with the same support.

alsipercha

Preventive safety device designed to prevent falls from a height during the formwork process. It allows the positioning of finishing plates, guardrails, etc. to be carried out with total safety.



formwork table

preassembled formwork consisting of a structure with Primary Steel Beam, Secondary Wood Beam and phenolic formwork surface.

swivel head

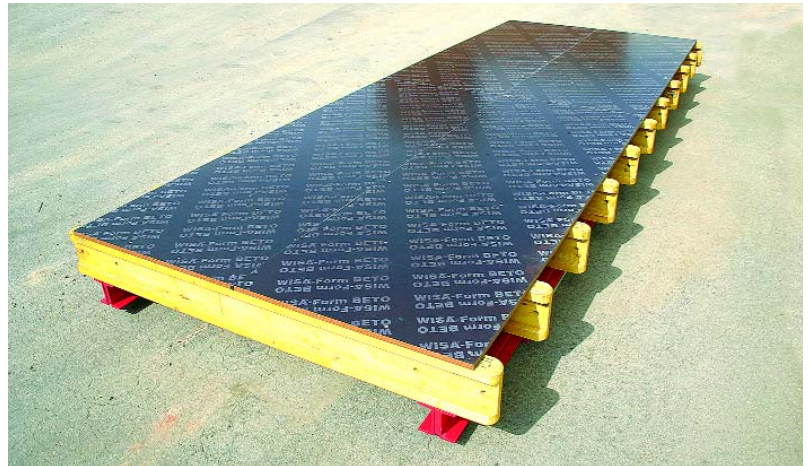
Connection element between the Table and the Post-shore. The fact that it is able to fold means that obstacles (guardrail, etc.) are not a problem when removing the table for the following positions.

Components of the Alsina Table System

design

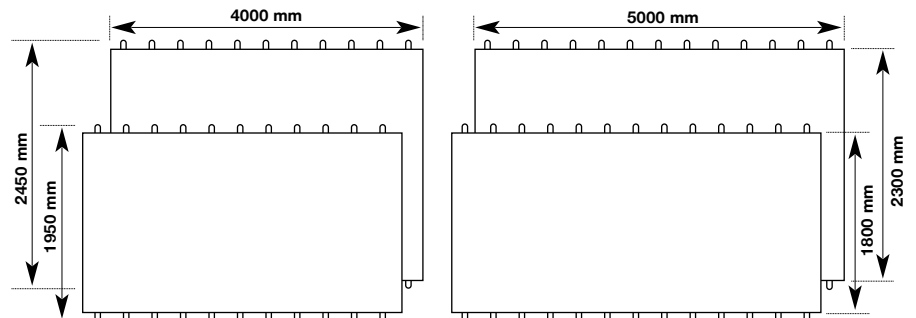
The Alsina Table is basically made up of 3 components:

- The phenolic surface of 21 mm: gives a fair-faced concrete finish.
- The HT-20 Secondary Beam: offers versatility.
- The UPN-120 Primary Beam: of painted steel, provides the necessary strength and durability.



modules

The Alsina Formwork Table is available in 4 standard measurements. The projection of the HT-20 secondary beam permits the easy positioning of the finishing plates between tables.

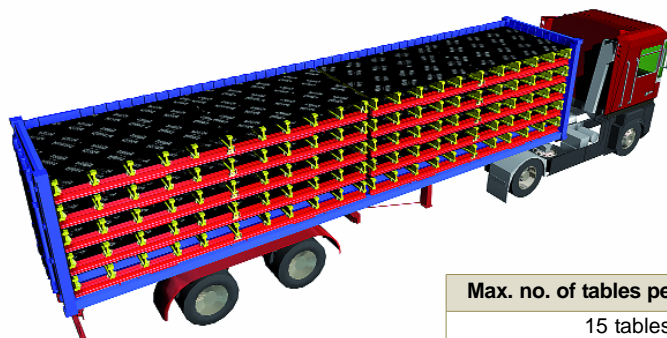


Measurements	Formwork surface	Measurements	Formwork surface
400 x 195 cm	7.2 m ²	500 x 195 cm	9.0 m ²
400 x 245 cm	9.2 m ²	500 x 245 cm	11.5 m ²

transport and storage

The Table is sent preassembled to the work site and has a support that allows it to be stacked without damaging the phenolic.

- The height of the table is 40 cm.
- A maximum of 5 tables can be stacked during storage and transport.
- The table has shackles used for its unloading with slings or using the vertical Transport C-hook.



Max. no. of tables per trailer (Box 12 m)
15 tables of 4 m
10 tables of 5 m (+2.5 ml)

Components of the Alsina Table System

swivel head

PATENTED

The aligning system of the Tables with Alsina post-shores is made with the folding head, which allows it to easily avoid obstructions (guardrails, etc.) when removing the table for future positions.

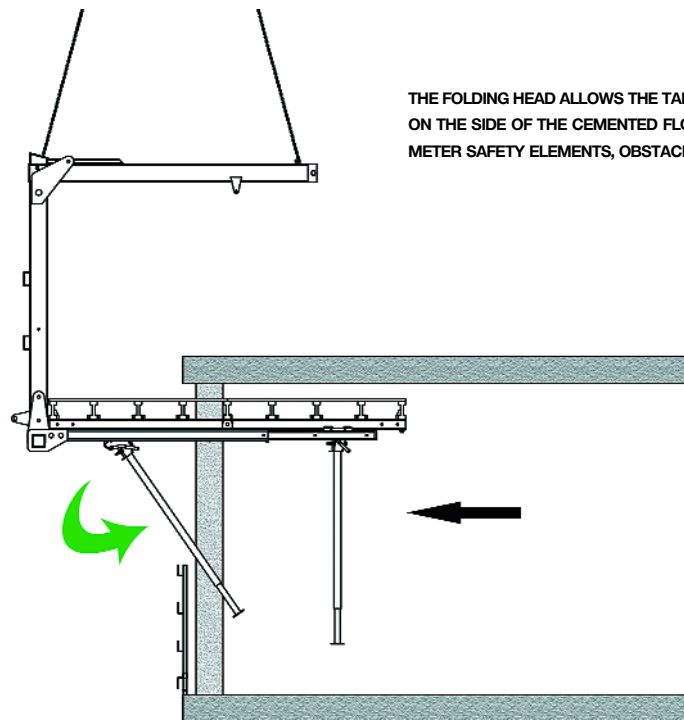
CHARACTERISTICS

- Quick and safe fastening system.
- Intuitive positioning and with easy access for the operator.
- Safety spring to secure the opening lever.
- Each Table has 7 positions for the placement of 4, 6 post-shores depending on the load or 4 post-shores in cantilever position.
- Free arrangement of the head in the main beam (cantilever tables).
- Maximum rigidity once placed thanks to their four anchorage points.

OPERATION

Hang the head from the anchor rod of the main beam. When raising the table up to their work position the post-shores will be placed in position by the effect of their own inertia.

In order to free the Head from the Primary Beam, you only have to use the lever (1), which allows the head (2) to tilt, and fold the post-shore when required to avoid obstructions.



THE FOLDING HEAD ALLOWS THE TABLE TO BE REMOVED ON THE SIDE OF THE CEMENTED FLOOR, AVOIDING PERIMETER SAFETY ELEMENTS, OBSTACLES, ETC.

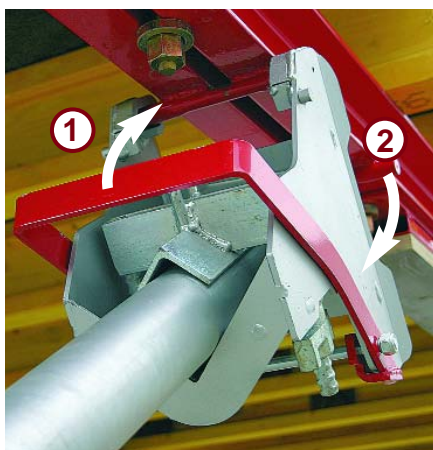
fixed head

The Alsina formwork Table allows shoring with telescopic post-shores and fixed head for anchoring to the primary beam. It is placed in the same supports as the post-shores and is especially useful in those projects where there are no obstructions around the perimeter of the floor.

light shoring head

For heights greater than 6 m, the table has a Fixed Head which allows coupling of the table to light shoring systems

**(For more information on Alsina Light Shoring, see page 144)*



Horizontal transport elements

transportation trolley

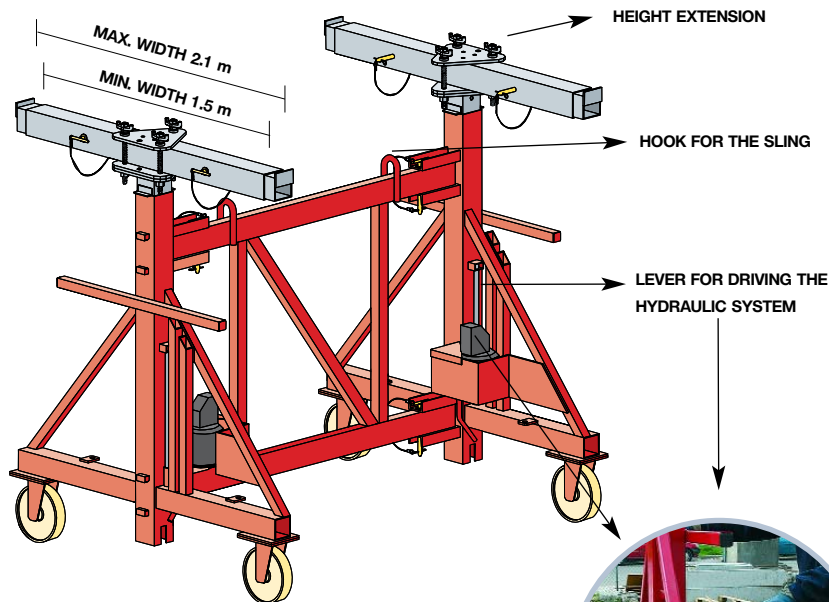
For the movement of the Tables on the floor to form, Alsina has designed a Transportation Trolley that is both easy to use and sturdy.

The Trolley can be completely folded up, providing efficient transport and storage on site. The dimensions of the trolley are 3.2 x 0.4 m when it is folded and 3.2 x 1.9 x 0.4 m when it is in working position.

The Trolley has a manual hydraulic system that facilitates formwork erection and stripping operations and the passing to the next concrete phase on the same floor without needing the crane in a quick, comfortable and safe way.

The maximum useful load is 1000 Kg.

PATENTED

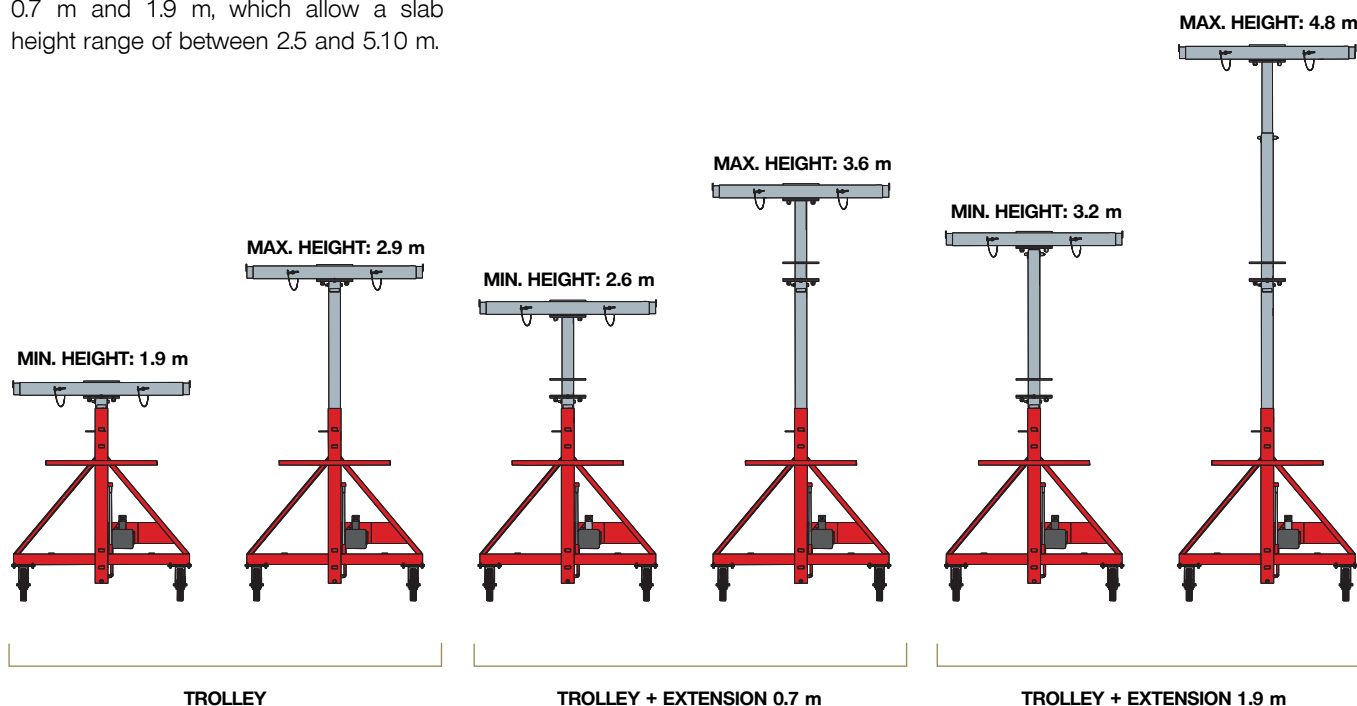


CLOSE-UP THE HYDRAULIC SYSTEM FOR LIFTING AND LOWERING



height extensions

The Trolley has two Height Extensions of 0.7 m and 1.9 m, which allow a slab height range of between 2.5 and 5.10 m.



Vertical transport components

c-hook

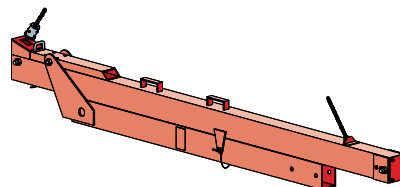
The vertical transport C-hook allows transport, placement of post-shores and the positioning and removal of the table on site to be carried out quickly and reliably.

The C-hook has a automatic mechanism that moves the centre of gravity based on the weight of load transported, avoiding the “swinging” of the table while moving. The maximum useful load is 1000 Kg.

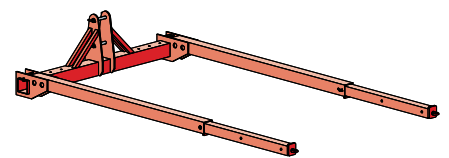


removable

For better transportation the C-hook is supplied in two parts, both with fastening components for slings, making their handling and assembly on site easier.



UPPER PART



LOWER FORK HEAD

multipurpose design

The C-hooks can be used with all the table modules, in both the width and length of the table.

The lower fork head can regulate the length and width in order to fit to the dimensions of each table.



A SHEAR PIN ALLOWS YOU TO SECURE THE WIDTH IN THE HOLES

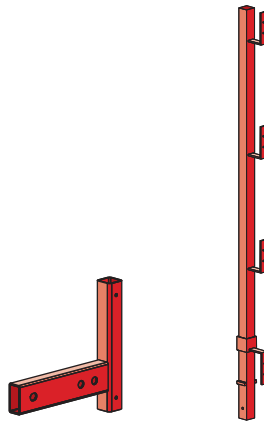
Safety elements

guardrail

The design of the Alsina Table includes a safe and stable work area, and has a safety railing of 1.4 m that is easy to position and has few parts to assemble.

The Safety Railing is made up of a safety Guardrail with three planks and a toeboard. It is positioned using the same connector support on both sides of the table.

Its fastening is completely safe, allowing the movement of the Tables with the Railing assembled.



CONNECTOR AND GUARDRAILS FOR THE RAILING IN BOTH DIRECTIONS

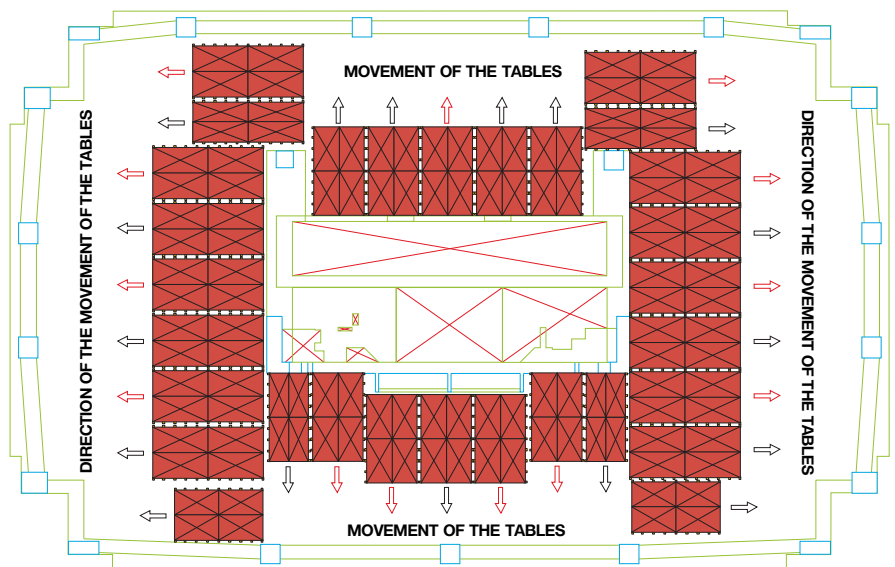


Alsitec

Alsina's technical staff offers the best solution for each project

Alsitec, Alsina's Engineering Department, relies on professionals with extensive experience and state-of-the-art technological resources.

They are able to respond to the necessities of each client; their job includes: to advise, collaborate and work together with our clients to be as efficient as possible and to continue offering an integral and personalized service.



LEGEND



The tables located in this position are introduced last and removed first so that the others avoid the column.



The tables in this position are introduced first in order to position them behind the column and are removed last.