

C-240 Climbing platform



ISO 9001

BUREAU VERITAS
Certification

N° 7002938



Encofrados J. Alsina, S.A.

Pol. Ind. Pla d'en Coll - Camí de la Font Freda, 1
08110 - Montcada i Reixac (Barcelona - Spain)
Tel. (+34) 935 753 000 - Fax (+34) 935 647 059
E-mail: alsina@alsina.com

www.alsina.com

c-240 Climbing Platform



The climbing platform C-240 system allows piles and walls of climbing cycles with concreting heights of up to 6 m to be formed with total safety for the worker.

It can be positioned with two anchorage systems: using M-24 ties bars or using Metal cones with ties set in the concrete.

► Properties

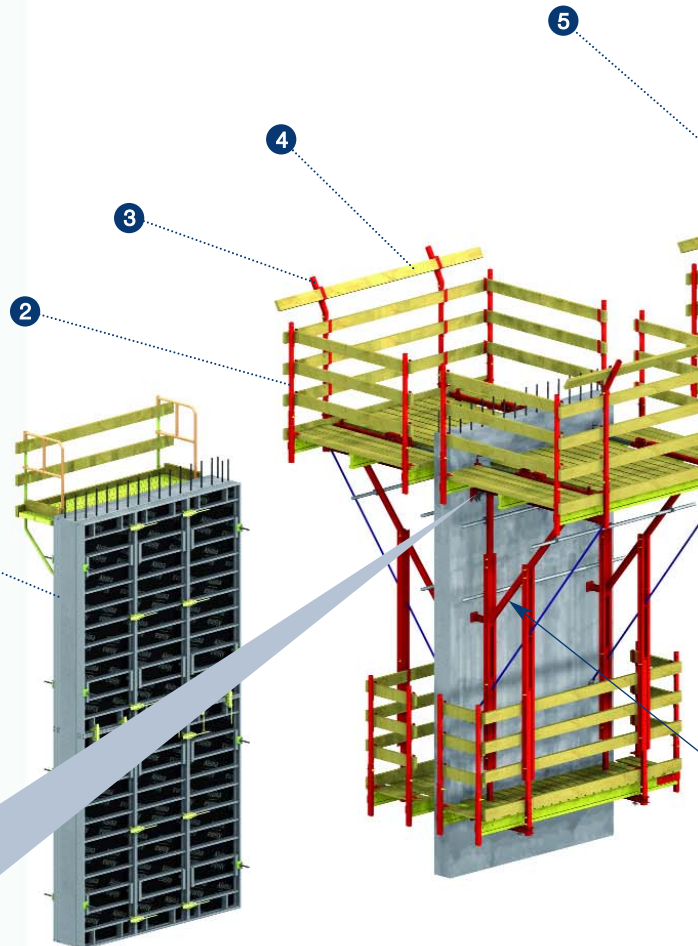
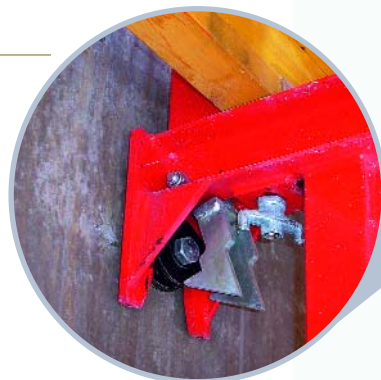
- Platform 2.4 m wide.
- For formwork height up to 6 m.
- Platform length for 3 m long formwork.
- Designed to withstand the different wind loads at any height.
- Platform designed to withstand 2 kN/m^2 in addition to the weight of the formwork (900 kg).
- Form removal system using a cart on wheels.
- It has a large and secure lower platform.

c-240

- 1- 3x1 M ALISPLY PANELS
- 2- GUARDRAIL
- 3- GUARDRAIL SUPPLEMENT
- 4- SAFETY RAILING
- 5- ALIGNERS
- 6- STRONGBACK
- 7- PRIMARY BEAMS
- 8- HANDRAIL NET SUPLEMENT

D-24 climbing ring

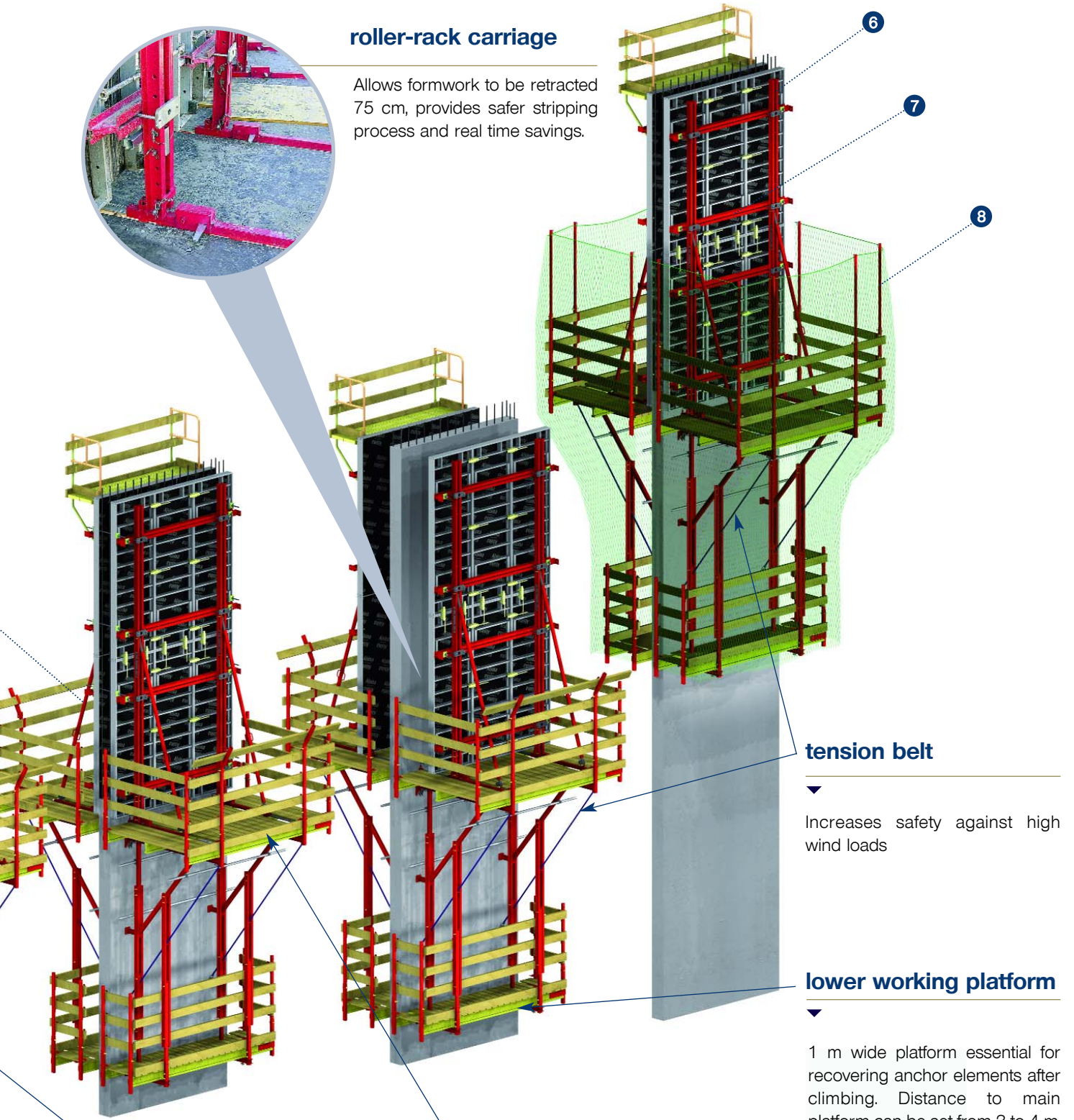
Anchor point for climbing brackets.





roller-rack carriage

Allows formwork to be retracted 75 cm, provides safer stripping process and real time savings.



tension belt

Increases safety against high wind loads

lower working platform

1 m wide platform essential for recovering anchor elements after climbing. Distance to main platform can be set from 3 to 4 m.

c-240 climbing bracket

walkway platform

2,4 m wide platform, obstacle free.

Climbing Platforms with Alispaly Circular

c-240 platform

Element designed to climb the wall formwork up to a height of 6 m with total safety for the worker.

It can be positioned with two anchorage systems: using M-24 ties bars or using metal cones with ties set in the concrete.

CHARACTERISTICS

- Platform 2.4 m wide.
- For formwork height up to 6 m.
- Platform length for 3 m long formwork.
- Designed to withstand the different wind loads at any height.
- Platform designed to withstand 2 kN/m^2 in addition to the weight of the formwork (900 kg).
- It has a wide and safe lower platform.

