

## *C-240 Climbing platform*



ISO 9001

**BUREAU VERITAS**  
Certification

Nº 7002938



### **Encofrados J. Alsina, S.A.**

Pol. Ind. Pla d'en Coll - Camí de la Font Freda, 1  
08110 - Montcada i Reixac (Barcelona - Spain)  
Tel. (+34) 935 753 000 - Fax (+34) 935 647 059  
E-mail: [alsina@alsina.com](mailto:alsina@alsina.com)

**[www.alsina.com](http://www.alsina.com)**

## c-240 Climbing Platform



The climbing platform C-240 system allows piles and walls of climbing cycles with concreting heights of up to 6 m to be formed with total safety for the worker.

It can be positioned with two anchorage systems: using M-24 ties bars or using Metal cones with ties set in the concrete.

### ► Properties

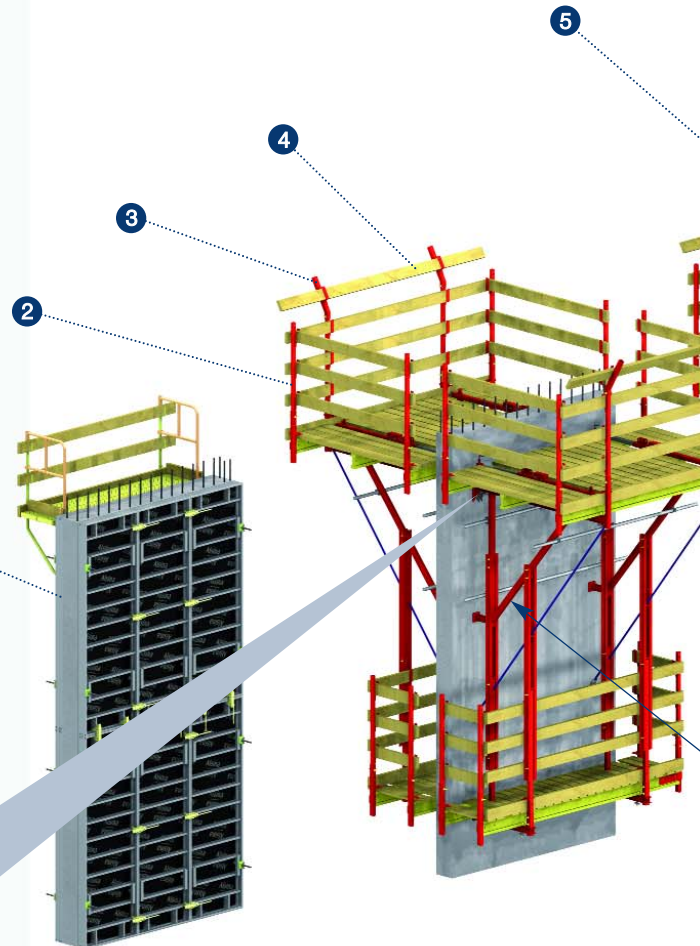
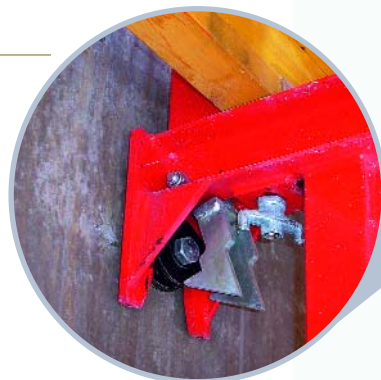
- Platform 2.4 m wide.
- For formwork height up to 6 m.
- Platform length for 3 m long formwork.
- Designed to withstand the different wind loads at any height.
- Platform designed to withstand 2 kN/m<sup>2</sup> in addition to the weight of the formwork (900 kg).
- Form removal system using a cart on wheels.
- It has a large and secure lower platform.

### c-240

- 1.- 3x1 M ALISPLY PANELS
- 2.- GUARDRAIL
- 3.- GUARDRAIL SUPPLEMENT
- 4.- SAFETY RAILING
- 5.- ALIGNERS
- 6.- STRONGBACK
- 7.- PRIMARY BEAMS
- 8.- HANDRAIL NET SUPLEMENT

### D-24 climbing ring

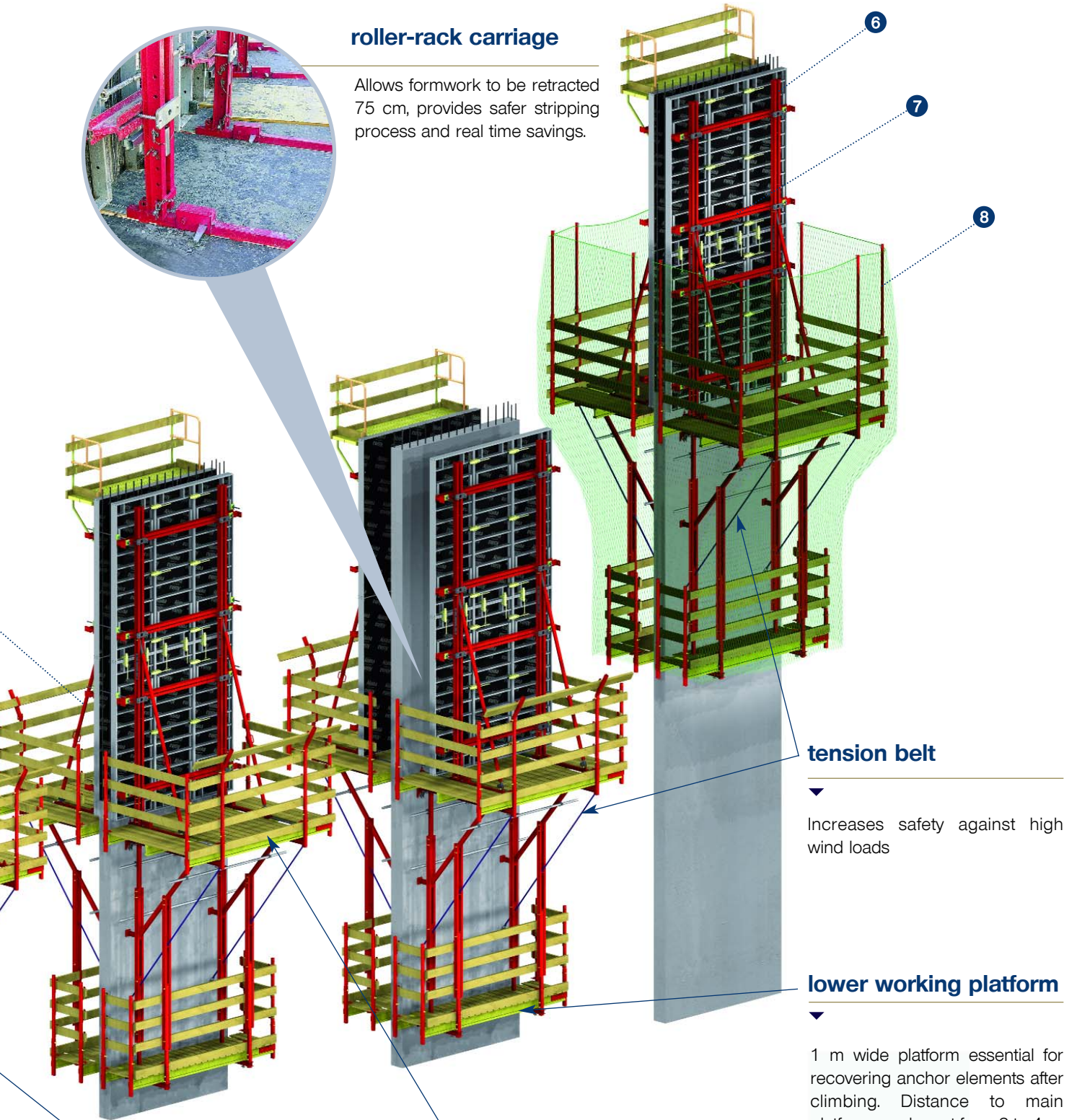
Anchor point for climbing brackets.





### roller-rack carriage

Allows formwork to be retracted 75 cm, provides safer stripping process and real time savings.



### tension belt

Increases safety against high wind loads

### lower working platform

1 m wide platform essential for recovering anchor elements after climbing. Distance to main platform can be set from 3 to 4 m.

### c-240 climbing bracket

### walkway platform

2,4 m wide platform, obstacle free.

# Climbing Platforms with Alispaly Circular

---

## c-240 platform

---

Element designed to climb the wall formwork up to a height of 6 m with total safety for the worker.

It can be positioned with two anchorage systems: using M-24 ties bars or using metal cones with ties set in the concrete.

### CHARACTERISTICS

- Platform 2.4 m wide.
- For formwork height up to 6 m.
- Platform length for 3 m long formwork.
- Designed to withstand the different wind loads at any height.
- Platform designed to withstand  $2 \text{ kN/m}^2$  in addition to the weight of the formwork (900 kg).
- It has a wide and safe lower platform.

