

The image features a tall building under construction, with its steel framework visible. A red overlay covers the left side of the image, while the right side is white, separated by a diagonal line. The company name 'Alsina' is written in a bold, red, serif font on the white background.

Alsina

FORMWORK
ENGINEERING
SOLUTIONS
EXPERTISE
SERVICE

MISSION STATEMENT

“Provide Solutions for Concrete Structures that help our Clients improve efficiency and safety in projects through dedicated service integrated within the Global Market, innovating and investing in People as a fundamental component of the business.”

Together,
we move forward.



Integrity

We value integrity above all and this means being sincere, honest and true to our word.



Innovation

We are engaged in constantly searching for new ideas and improvements in everything we do, both in products as well as business processes.



Simplicity

We conduct business naturally, in a friendly and humble way, far from arrogance and pride.



Deep respect for the individual

We show special consideration to others, especially to our employees who help create our family business spirit.



Commitment

All of us at Alsina are committed to and truly excited about the business plan.



Productivity

Productivity is the result of capable people who strive in the pursuit of simplicity in processes and decision-making.



Teamwork

For us, it involves coordination, trust, sharing and generosity; specially communication and participation regardless of the level of responsibility.



Customer focus

All the above values are at the service of our clients. The client is our reason for existence as a company and the center of all of our activities. Our organization and processes are geared to anticipating and meeting their needs.



COMPREHENSIVE SERVICE

Alsina strives to be one of the most recognized companies in the industry due to its comprehensive service capacity. The foregoing is a result of the quality of the company's human team, the range of solutions and services that Alsina offers its clients and its business management focused on total quality.



Experience in complex projects

Alsina has 70 years of experience in the industry, thousands of completed projects back us as one of the leading companies in the industry given our technology and management skills. We are a fundamental part of the business and therefore understand the complexity of carrying out major projects and assume the responsibility of advising and assisting our clients so they can achieve their goals.

Our goal is to offer one of the most expert services in the market. Therefore all areas of Alsina are interconnected in order to offer the best solution in each case and earn our customers' trust.

Comprehensive project management

Alsina's sales team consists of professionals who use their experience and professional knowledge to offer cost-effective and decisive solutions. We understand the complexity of projects standing at our customer's side so that we can listen, advise and monitor the evolution of the works until completed.

Alsina always offers to its clients the best alternative to address their concrete project "in situ." Trust Alsina as a strategic partner.

Global Logistics Service

The logistics service is key to ensuring that the work is carried out within the time frame specified by the customer. To do this, Alsina has its own network with facilities that ensure the supply of equipment "just in time" to guarantee the formwork rental service.

All of our formwork complies with the same cycle worldwide: delivery on site, implementation of the concrete structure, management of returns, repair of equipment under the quality standards of ISO 9001:2015 and return to the rental warehouse ready for use in another project.





OUR GOAL: TOTAL QUALITY

Alsina works with the ISO 9001:2015 Certification at its centers engaged in the sale and rental of equipment for concrete formwork. The scope of this certification includes the design, manufacturing, marketing (sales and rental) and maintenance of our concrete formwork equipment. It also includes the provision of formwork equipment and scaffolding assembly services and the implementation of collective protection at work sites.

Design

The process of designing new systems ensures an orderly procedure in accordance with the standard: Planning product realization consistent with other systems and client specifications

Compliance with product standards and future technology reviews. Control of product compliance pursuant to quality standards.

Manufacture

Manufacturing new systems involving full control: Planning the manufacture of the product according to the applicable standard.

Selection and ongoing evaluation of our suppliers in the supply chain. Quality control of the product in line with quality standards.

Maintenance

Control allows us to ensure the homogeneity of processes, methods and quality on a worldwide basis. Maintenance management systems through normalized and standardized processes.

Compliance with quality commensurate with product standards on the market. Review of regulations and processes to ensure the required quality at all times.

Marketing

Marketing of our services and systems in sales and rental arrangements requires the following: Ongoing validation of the services provided to our clients.

Client complaint responses in accordance with the service provided. Measurement and analysis of client satisfaction on a regular basis.

On-site assembly

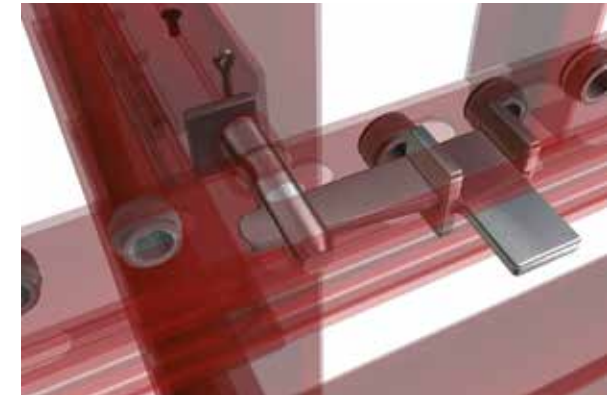
The assembly of formwork and scaffolding must be carried out pursuant to law, the equipment management and the applicable standard for each implementation.


Ensure compliance with the specific standard for systems used, integration in the process of all the companies providing the service, and the quality of execution and compliance with the deadlines.

Collective protection

This activity requires a thorough monitoring of compliance with certifications, technical team management and the applicable regulations for each installation.

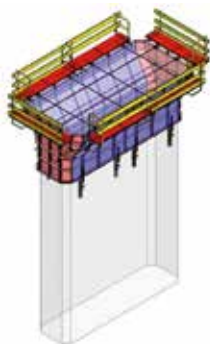
Perform a study prior to implementation consistent with the project and existing regulations. Involvement of trained personnel commensurate with required regulations. Monitoring and control of installations made to ensure their validity over time.



A photograph of a large concrete bridge under construction. The bridge features a wide, flat deck supported by a massive concrete pier. The underside of the bridge deck is covered in a complex network of red and yellow scaffolding and formwork, indicating ongoing construction work. The background shows a clear blue sky and a flat, arid landscape.

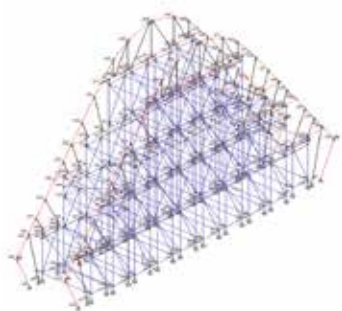
ALSITEC: THE ALSINA GROUP TECHNICAL OFFICE

Alsina has its own technical office: Als iTec. It is comprised of professionals with proven experience in studying works and providing comprehensive and cost-effective solutions. All Alsina technicians are connected through a know-how network which allows them to be continuously involved in training. Our clients benefit from the accumulated experience in solving works worldwide.



Complex studies

Some formwork solutions require a preliminary study to ensure the use to which it will be subjected.



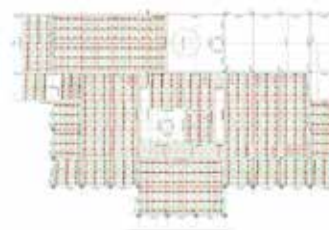
Certified calculation

Sometimes it is necessary to conduct a certified study of the solution provided, for which Alsitac has its own engineers.



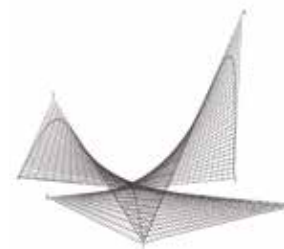
Software development

Alsitac has developed more than 50 programs of its own for structural calculation and formwork system layouts.



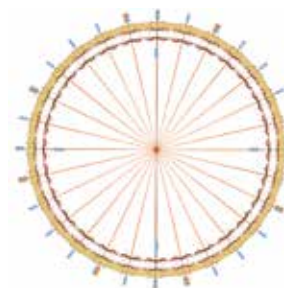
Using our own software

Using our own programs allows us to offer clients tailored solutions; we study 2,000 works every year.



"In-situ" service

Complex structures require a preliminary study to provide the right solution safely and profitably.



Technical layout

We provide detailed drawings and a count of all the proposed solutions, thus ensuring the client's success.



Mecano Alsina

A key to Alsina's expansion is based on the implementation of its slab formwork systems. Mecano Alsina includes a full range of slab formwork systems, which are designed and perfected to offer on-site profitability exceeding the usual wood-based systems. More than 10,000 completed projects make us the leader in the Mecano system market.

Commercial

We offer a complete service in order to optimize implementation time and costs for each project. We offer the most cost-effective formwork for slabs and other Alsina solutions for walls, columns and scaffolding. Our systems are used in office buildings, hotels, museums, sports centers, health centers, schools and universities, among others.



Water

Alsina is a leader in the implementation of wastewater treatment plants, desalination plants and water works in general. The productivity of our systems in this type of work is crucial; in addition, there is also the development of special solutions for complex issues. The experience of having worked on over 750 projects is proof of our ability to tackle this type of projects.

Transportation

The constant supply of civil engineering equipment enables us to offer one of the most comprehensive services on the market. We effectively solve overpasses, viaducts, road widening, piers, abutments, tunnels, cut-and-cover tunnels, etc.



Dams

We have contributed our engineering capability in all these projects, whether conducting solutions that complement our formwork systems or adapting existing ones to the needs of each project and client. The execution rates, along with solutions adapted to the environment, have allowed us to successfully solve many works of this kind.

Ports

Alsina has implemented various projects related to the maritime environment: port silos, dock expansions, maritime barriers, port lights, capping beams, dam walls and the construction of dikes to cope with the force of the sea.

FRIENDLY FORMS

Alsina is committed to the development and constant innovation of new formwork systems that add value to the market. Over 150 Alsina patented solutions have helped industrialize the formwork sector. Alsina offers a team of people and facilities that are in close contact with our clients and develop the best formwork solutions.





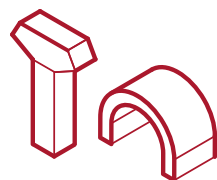
ALSINA PROJECTS



Mecoconcept



Water



Transportation





GLOBAL PRESENCE

Alsina has its own network of 35 subsidiaries spread throughout the world. About 700 people are working at these sites. Alsina's personnel are interconnected via an internal network that allows them to keep abreast of the latest innovations and company news worldwide. Contact your local office to learn more about the Alsina Group.



