

# Alsina

FORMWORK SOLUTIONS

# WATER

CORPORATE • TRANSPORTATION • WATER • ENGINEERING • MECANOCONCEPT



# ALSINA MISSION STATEMENT

“To offer Solutions for Concrete Structures that help our customers improve efficiency and safety in their projects, through a committed service and proximity in the global market by innovating and investing in our workers as a key component of the business.”

ISO 9001

BUREAU VERITAS  
Certification

Encofrados J.Alsina, S.A.



## WASTE WATER TREATMENT PLANTS

**Stewart Creek** (Texas, USA)  
**Sacramento** (USA)  
**Walcrest** (Dallas, USA)  
**Utebo** (Spain)  
**Apopka** (Florida, USA)  
**Durazno** (Uruguay)  
**Maldonado** (Uruguay)  
**Bullas** (Spain)  
**La Serena** (Chile)  
**Bello** (Colombia)  
**Adeje** (Spain)  
**Guijuelo** (Spain)  
**Valderrobles** (Spain)  
**Berlín** (Germany)  
**La Cadellada** (Chile)  
**Guijuelo** (Spain)  
**Cerro Verde** (Peru)  
**Galata** (Romania)  
**Escalerilla – La Chira** (Peru)  
**Zarszyn** (Poland)  
**Padock Lake** (Wisconsin – USA)

**Nine Springs** (Wisconsin – USA)  
**Fox Lake** (Illinois, USA)  
**Walton** (Indiana, USA)  
**Thomas P. Smith** (Tallahassee, USA)  
**Fort Mc Murray** (Alberta, Canada)  
**Koontz Lake** (Indiana, USA)  
**Westbend** (Wisconsin, USA)  
**Pedrogao** (Portugal)  
**Palos Park** (Illinois, USA)  
**East Central Harrison** (Mississippi, USA)  
**La Paloma** (Spain)  
**Minho-Lima** (Portugal)  
**Laguna del Cisne** (Uruguay)  
**Reedsport** (Oregon, USA)  
**Clearmont** (Florida, USA)  
**Live Oak** (Florida, USA)  
**Tantehue** (Chile)  
**Espina** (Uruguay)  
**Ca’Nordio** (Italy)  
**Torrijos Valmojado** (Spain)

## DESALINATION PLANTS

**La Escondida** (Chile)  
**Torre Vieja** (Spain)  
**Copiapo** (Chile)  
**Magtaa** (Argelia)

## DAMS

**Yaurisque** (Peru)  
**Las Cruces** (Panama)  
**Baixo Sabor** (Portugal)  
**Santolea** (Spain)  
**Martil** (Morocco)



# COMPREHENSIVE SERVICE

**Experience in complex projects.** Alsina has 65 years of experience in the industry, thousands of completed projects back us as one of the leading companies in the industry given our technology and management skills.

We are a fundamental part of the business and therefore understand the complexity of carrying out major projects and assume the responsibility of advising and assisting our clients so they can achieve their goals.

Our goal is to offer one of the most expert services in the market. Therefore all areas of Alsina are interconnected in order to offer the best solution in each case and earn our customers' trust.

**Comprehensive project management.** Alsina's sales team consists of professionals who use their experience and professional knowledge to offer cost-effective and decisive solutions.

We understand the complexity of projects standing at our customer's side so that we can listen, advise and monitor the evolution of the works until completed.

Alsina always offers to its clients the best alternative to address their concrete project "in situ." Trust Alsina as a strategic partner.

**Global Logistics Service.**

The logistics service is key to ensuring that the work is carried out within the time frame specified by the customer.

To do this, Alsina has its own network with facilities that ensure the supply of equipment "just in time" to guarantee the formwork rental service.

All of our formwork complies with the same cycle worldwide: delivery on site, implementation of the concrete structure, management of returns, repair of equipment under the quality standards of ISO 9001:2015 and return to the rental warehouse ready for use in another project.



# WATER TREATMENT PLANTS

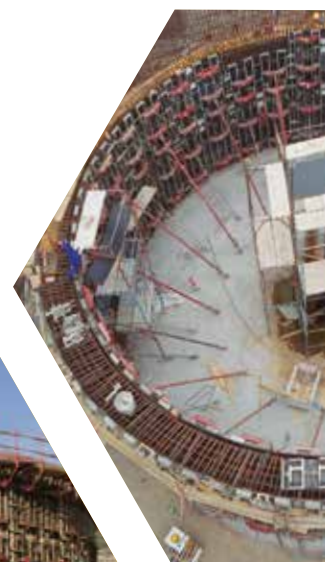
Alsina is one of the leading international companies in solving water infrastructure projects; we have accumulated experience in over 1000 projects worldwide.

The development of new engineering solutions has enabled us to expand our cooperation in many water projects, the concrete structures of which have been resolved effectively with our formwork solutions and systems.



Cerro Verde  
WWTP, Peru

Utebo WWTP,  
Spain





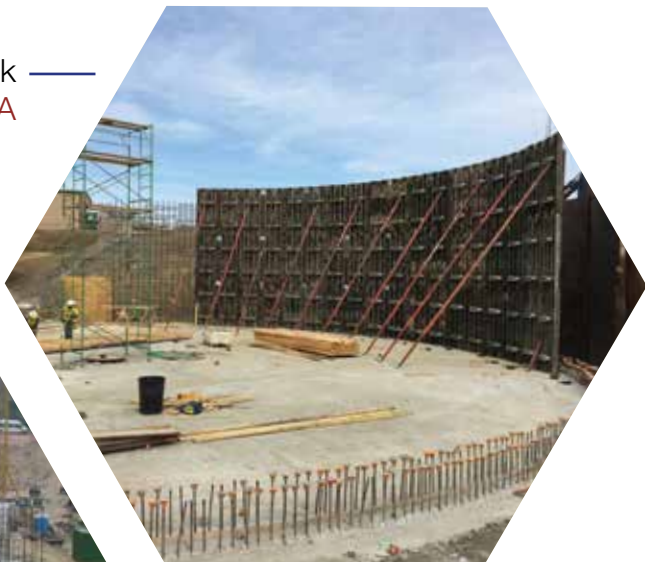


Bello WWTP, Colombia



— Tandarei  
WWTP,  
Romania

Stewart Creek  
WWTP, USA



— Ave WWTP,  
Portugal



Torre Vieja Desalination Plant, **Spain**



## DESALINATION PLANTS

Alsina's formwork systems have been used in the successful implementation of thousand of water projects around the world thanks to its safety, adaptability and profitability, as well as the guarantee of our reliable supply chain ensuring formwork delivery according to each constructive work phase, which has allowed us to participate in a wide range of projects, such as La Escondida Desalination Plant in Chile or the Cerro Verde Desalination Plant in Peru, among others.

Alicante  
Desalination Plant,  
**Spain**







— Marina Baja  
Desalination  
plant, Spain

— Magtaa  
Desalination  
Plant,  
Algeria



— Torrevieja  
Desalination  
Plant, Spain





Tanks in Virginia, [United States](#)



Tanks in Canordio, [Italy](#)



Tank in Koontz Lake, [United States](#)





Macropolis Industrial Park tanks, Peru

## WATER TANKS

Alsina offers one of the safest and most cost effective solutions for building water tanks through its Alisply Walls and Alisply Circular formwork systems, which are perfect for this type of projects, as well as safe, reliable and profitable.

In addition to its expertise in building a large variety of water projects, such as sewage treatment plants, watertight and water tanks, formwork systems developed by Alsina make it one of the best formwork options for water tanks and other water projects.



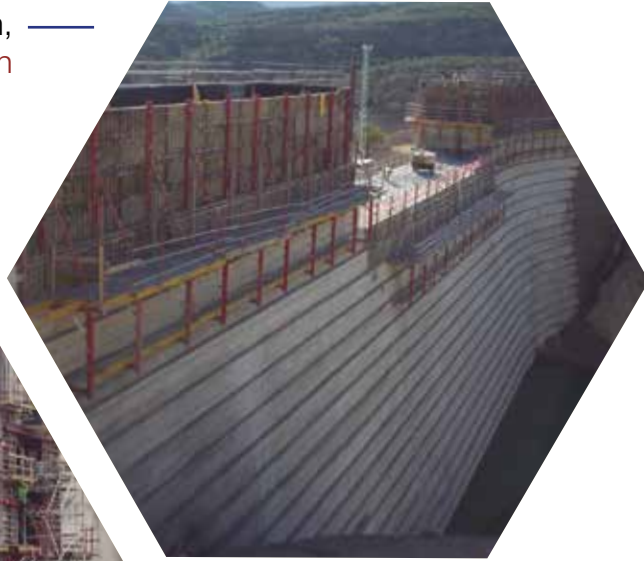


# DAMS

With more than 30 years successfully implementing water infrastructures, Alsina offers the best formwork choice due to the compatibility, adaptability and profitability of its formwork solutions, which allow the company to offer the best solutions and service for all kind of projects. The company has successfully participated in a wide range of water projects so far, such as the Martil Dam in Tetuan (Morocco), Las Cruces Dam in Panama, the Yaurisque Dam in Cusco (Peru) or the Santolea Dam in Spain, among many others.



Santolea Dam, —  
Spain



Las Cruces Dam,  
Panama —



—  
Eiras Dam,  
Spain



Yaurisque Dam, Peru —



Castellcir Dam, Spain —



# HYDROELECTRIC POWER PLANTS

To ensure successful implementation of industrial projects, it is essential to be very strict on formwork system delivery times. It is also essential to have the engineering expertise needed to successfully undertake this type of work and thus guarantee client satisfaction.

To achieve this, Alsina has its own logistics centers whose primary mission is to provide the highest level of service in equipment supplied to projects under construction, thus ensuring that we offer one of the best services on the market.



Bocalatun Hydroelectric Power Plant,  
Panama



Asco Hydroelectric Power Plant, Spain



Las Higueras Hydroelectric Power Plant,  
Chile



Macho River Hydroelectric Power Plant,  
Panama





Las Higueras Hydroelectric Power Plant, Chile





Blanes Seawall, Spain



Cartagena de Indias Dock, Colombia



Barcelona  
Dock, Spain



Llanes Dock,  
Spain



Alicante Dock,  
Spain



## MARITIME WORKS

Alsina has implemented various projects related to the maritime environment: port silos, dock expansions, maritime barriers, port lights, capping beams, dam walls and the construction of dikes to cope with the force of the sea.

We have contributed our engineering capability in all these projects, whether conducting solutions that complement our formwork

systems or adapting existing ones to the needs of each project and client. In addition to our own experience, we also offer our service capabilities and to safely implement concrete structures in complex environments, such as the marine environment.





**Comprehensive Sales,  
Logistics and Technical  
Service**



**Water  
Intank**



**Water  
Treatment Plants**



**Desalination  
Treatment Plants**



**Sewage  
Treatment Plants**



**Water  
Canalization**



**Dams and  
Reservoirs**



**Maritime  
Ports**

040ENKZ



**Alsina Group**  
Tel.: (+34) 935 753 000  
Web: [www.alsina.com](http://www.alsina.com)  
E-mail: [alsinainfo@alsina.com](mailto:alsinainfo@alsina.com)



*Alsina Formwork Engineering*

