

# **Alsina**

**FORMWORK SOLUTIONS**

# TRANSPORTATION

CORPORATE • TRANSPORTATION • WATER • ENGINEERING • MECANOCONCEPT







ISO 9001  
BUREAU VERITAS  
Certification



Construction - SCA

## ALSINA MISSION STATEMENT

“To offer Solutions for Concrete Structures that help our customers improve efficiency and safety in their projects, through a committed service and proximity in the global market by innovating and investing in our workers as a key component of the business.”





# COMPREHENSIVE SERVICE

**Experience in complex projects.** Alsina has 65 years of experience in the industry, thousands of completed projects back us as one of the leading companies in the industry given our technology and management skills.

We are a fundamental part of the business and therefore understand the complexity of carrying out major projects and assume the responsibility of advising and assisting our clients so they can achieve their goals.

Our goal is to offer one of the most expert services in the market. Therefore all areas of Alsina are interconnected in order to offer the best solution in each case and earn our customers' trust.

**Comprehensive project management.** Alsina's sales team consists of professionals who use their experience and professional knowledge to offer cost-effective and decisive solutions.

We understand the complexity of projects standing at our customer's side so that we can listen, advise and monitor the evolution of the works until completed.

We are on the client's side listening to them, advising them and always offering the best alternative to address their concrete project "in situ." Trust Alsina as a strategic partner.

**Global Logistics Service.**

The logistics service is key to ensuring that the work is carried out within the time frame specified by the customer.

To do this, Alsina has its own network with facilities that ensure the supply of equipment "just in time" to guarantee the formwork rental service.

All of our formwork complies with the same cycle worldwide: delivery on site, implementation of the concrete structure, management of returns, repair of equipment under the quality standards of ISO 9001:2015 and return to the rental warehouse ready for use in another project.



# OVERPASSES

Alsina offers a wide range of solutions developed by the company in order to successfully carry on this type of Civil Works thanks to our friendly forms, designed to be reliable and safely perform the project at hand.

Our worldwide know-how connects engineers around the world to successfully apply the best solutions for each project and costumer. Alsina's formwork systems have been successfully used in multiple transportation projects, such as the Perez Zujovic roundabout in Chile or the Elevated Stations of the Panama Subway, among many others.



Tosses Viaduct,   
Spain

Ovidiu Bridge,  
Romania 







Perez Zujovic Roundabout, Chile



— Castejon  
Railway,  
Spain

Burgos Ring  
Road,  
Spain —



— Ranco Lake  
Bridge, Chile



# UNDERPASSES

Alsina has been more than 15 years involved in international construction Civil engineering, offering profitable, safe and reliable formwork systems and guaranteeing the best options and choices including the design of special elements adaptable to standard systems for the benefit of our clients in this type of Civil Works. Our formwork systems and engineering solutions have been successfully used in several transportation projects.



Mohamadia Underpass, —  
Morocco



C-17 Road, —  
Spain



University  
Hospital  
Access, Spain



Casablanca —  
Underpass, Morocco



Underpass in Santiago, Chile —





# RAILWAYS

We offer a wide range of formwork solutions to solve this type of projects, which, along with our reliable supply chain ensuring formwork delivery according to each constructive work phase, has allowed us to participate in very diverse railway projects around the world, such as the rehabilitation of a historic railway in Romania, the construction of the Casa Kenitra railway in Morocco or several AVE sections in Spain, among many others.

Alpera Railway,  
Spain







Elevated Stations in Panama Subway, Panama



— Simon Bolivar  
Subway Station,  
Chile



— Cementerios  
Subway Station,  
Chile

Kalkaji  
Subway  
Station,  
India





# PILES

We offer reliable, safe and profitable formwork solutions, as our Multiform product range for Civil Works, implemented by the know-how of many engineers connected around the world through our company in order to offer the best choice and solution for every project and customer.

Backed up by more than 15 years of international experience in Civil engineering around the world, Alsina has supplied its wide range of formwork solutions for transportation projects such as the A23 Highway or the Viaduct 7 of the insular ring in Tenerife (Spain) among many others.



Sarria Bypass, Spain



Cocentaina Carriageway, Spain



Elorrio Bypass, Spain

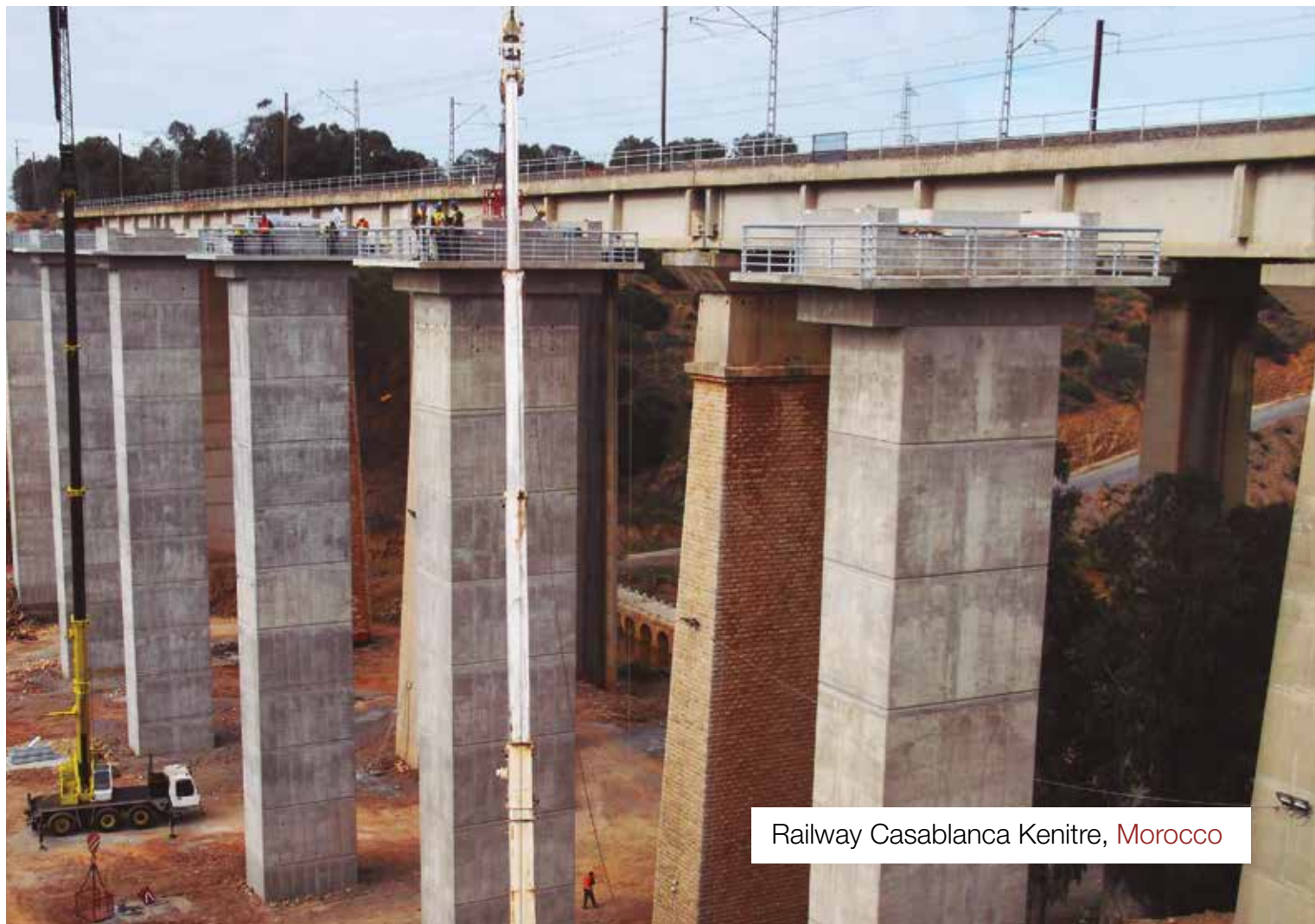


Alpera Railway, Spain



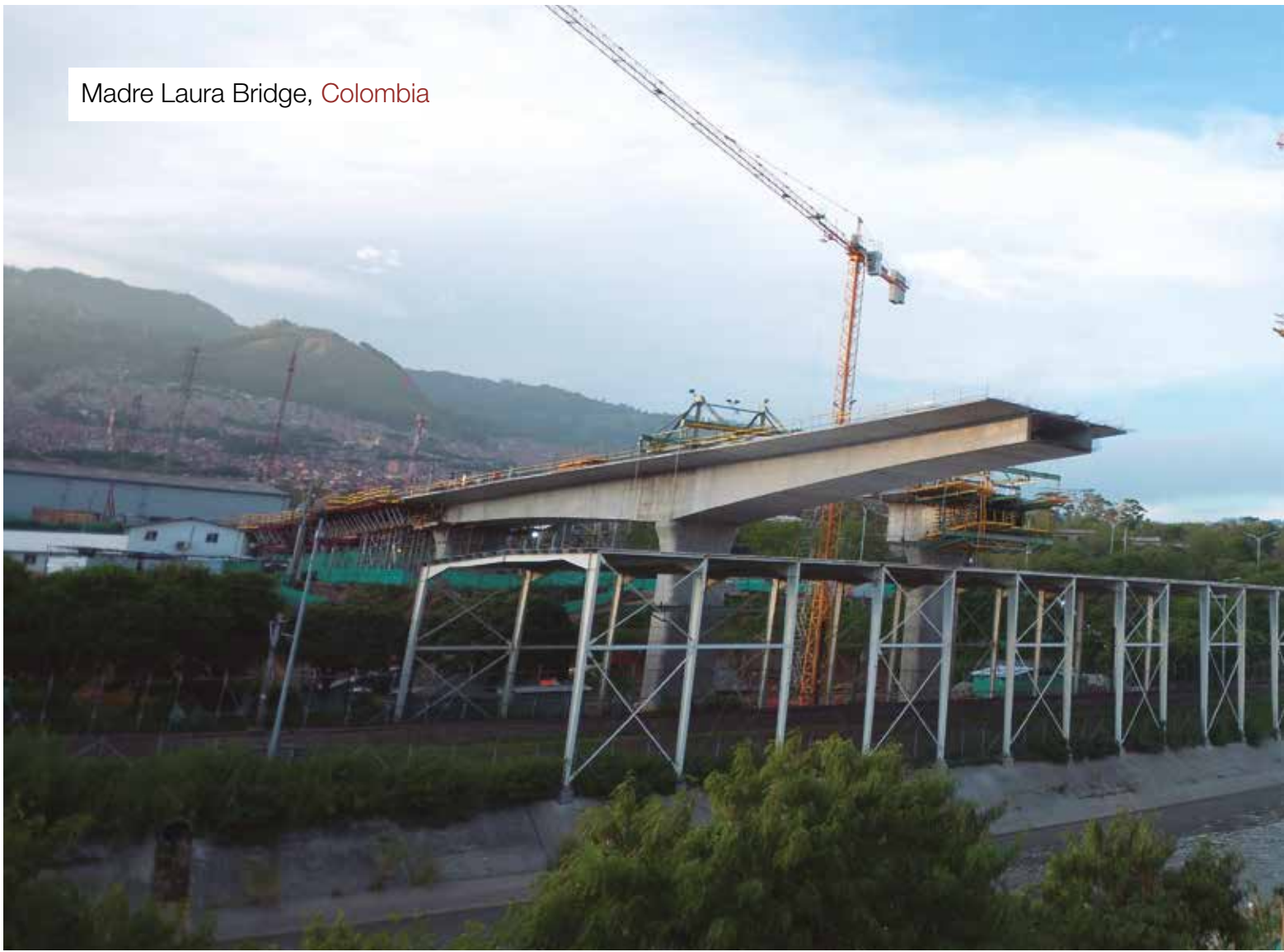


Insular Ring in Tenerife, Spain



Railway Casablanca Kenitre, Morocco





## CANTILEVER CARRIAGES

Alsina offers a wide variety of solutions for the implementation of Civil Works. We tackle complex projects with total success thanks to formwork solutions such as our Cantilever Carriages, used in many Civil works around the world such as the Madre Laura Bridge or the Cisneros –Loboguerrero road in Colombia, as well as the Atlantic Bridge over the Panama Canal, among many others.











La Aldea cut and cover Tunnel entrance, Spain



Cisneros-Loboguerrero Road, Colombia





Pajares Tunnel, Spain



El Tanque Cut and Cover Tunnel, Spain



A Canda Tunnel Entrance, Spain



El Bicho Cut and Cover Tunnel, Spain

---

## TUNNELS

Ongoing investment in providing a wide range of civil engineering formwork solutions allows us to offer one of the most comprehensive services on the market for tunneling in mines and for implementing cut-and-cover tunnels.

We've successfully participated in a great deal of tunneling projects around the world, such as the Cisneros Tunnel or La Linea Tunnel in Colombia, the Puruchuco Tunnel in Peru or the A Canda Tunnel in Spain, among so many others.





**Comprehensive  
Technical and  
Logistics Service**



**Climbing systems,  
safe and reliable**



**Tunnels and  
Subway Solutions**



**Civil works systems  
and solutions**



**Cut and Cover  
Tunnels Solutions**



**Pilasters  
Solutions**



**Straight and radius  
wall solutions, both  
crane-set and  
hand-set**



**Special Forms  
and Systems**