

## **SUCCESSIVE CANTILEVER CARRIAGES**

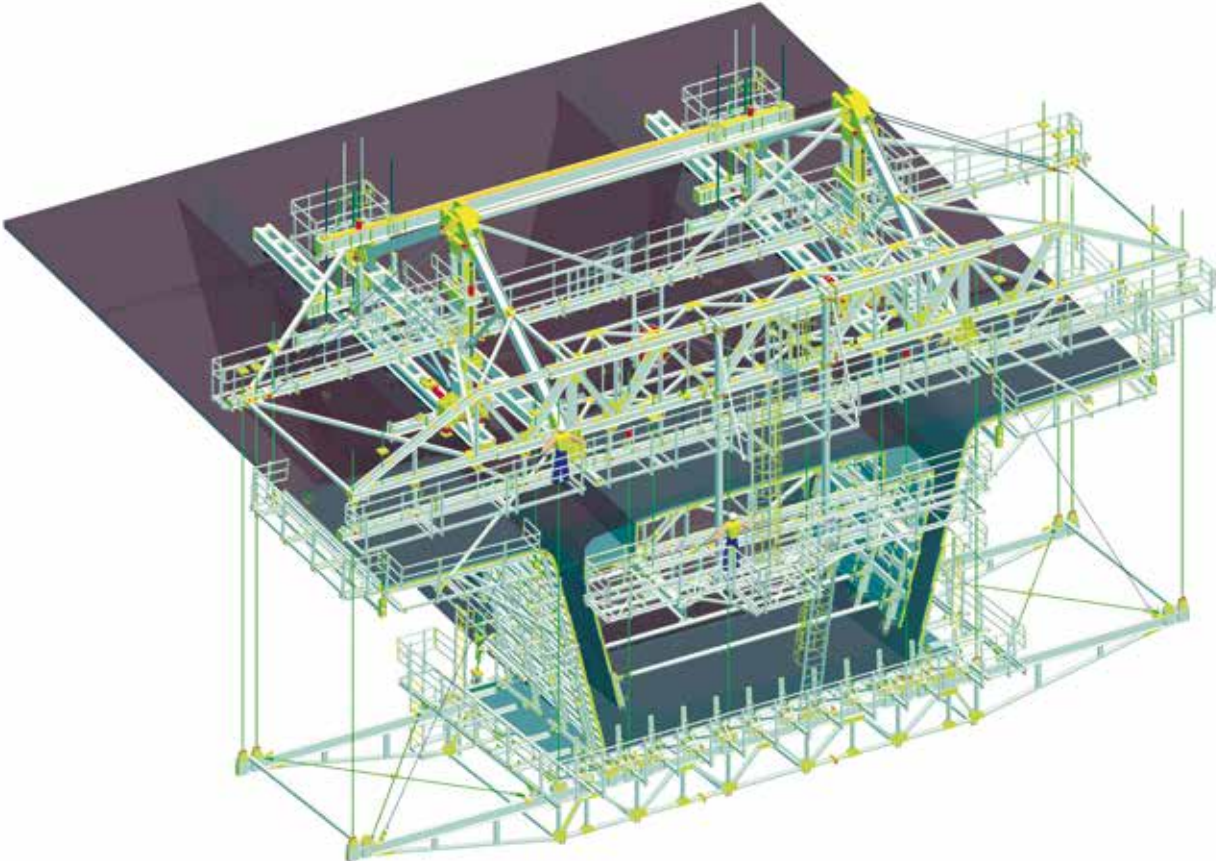
**PRODUCT BROCHURE**



# Successive cantilever carriages



Madre Laura bridge, Colombia



Carriages for implementing deck construction in cantilever bridges and wide span compressive arches using the successive bolt method. Set up of 16'-4 <sup>7/8</sup>" (5 metres) or even more in special cases.

- 
- Successive cantilever carriage with hydraulic or mechanical.
- For constant and variable transversal section.
- With vertical or inclined side wall.
- Assembly with crossmember for the first setting over the pile head.

