

# ONE SIDED CLIMBING SYSTEM

PRODUCT BROCHURE



## One sided Climbing System



BBVA Bank Headquarters, Spain

A system for safe one side construction of vertical and inclined walls at heights. Alsina's T1C Climbing System provides solutions for dam and pier construction and complex projects that require one side formwork. The system's versatility provides standard as well as special solutions. A profitable system due to the components of the Alsina Multiform system. Easy assembly and element connection via pins, not requiring the use of tools. Compatible with all corresponding Alsina safety systems. The working platforms have been designed to provide integral operator safety, both while working on the platforms and during movement between them.



### Simple

The system is designed for fast assembly. Most of the elements are connected by pins and do not require the use of tools or threaded fasteners. The cast-in anchoring system of the T1C Climbing System uses a lost anchor and a M30 or M36 cone use.



### Safe

The Alsina climbing systems have been designed taking into account the complete safety of the operators in all the job processes. The working platforms offer integral operator safety, both while working on the platform and when moving between brackets.



### Versatile

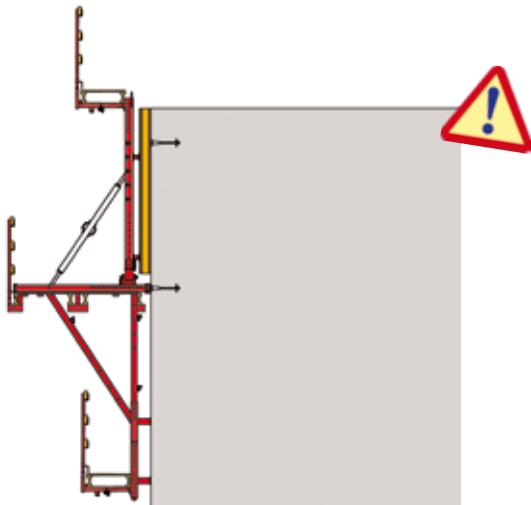
The T1C Climbing System is designed to perform a wide range of interior wall sections with standard elements. The manufacture of a customized climbing set can be studied and calculated in order to provide a solution to any project requirement.



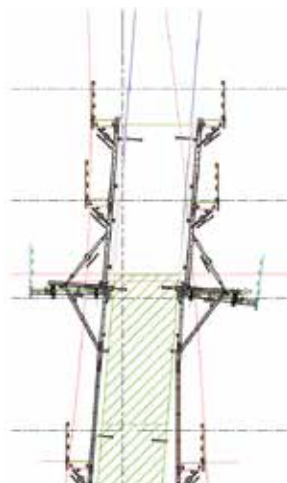
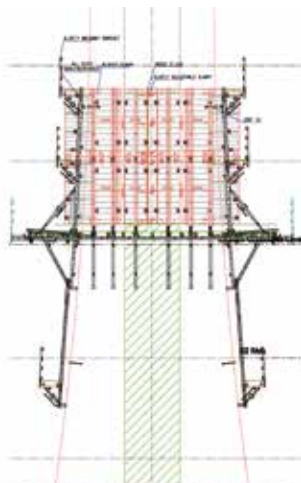
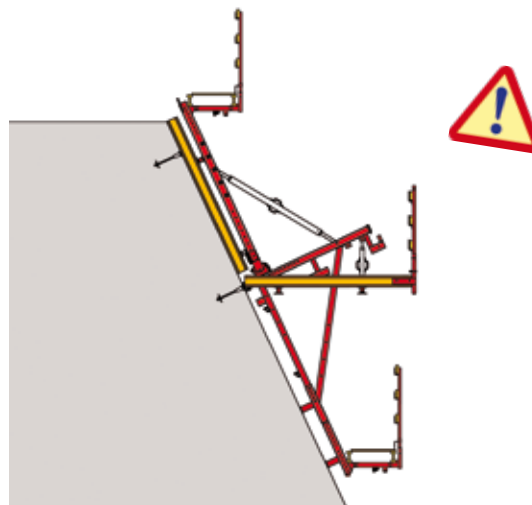
### Decisive

The T1C Climbing System provides solutions for dam, pier and complex project construction that requires the use of this type of climbing formwork for one or two faces, whether vertical or inclined. Alsitec, Alsina's Technical Department, performs a complete study to adapt the system to the project.

**Straight vertical climbing on one side**



**Inclined vertical climbing on one side**



### Alsitec

Alsina's Technical Office performs a technical study consisting of the layout and distribution of the material necessary to carry out the project, as well as the specific technical counseling needed to solve the formal and structural features of each project.