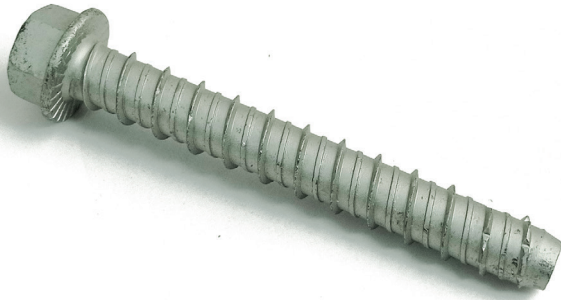




ANCHOR BOLT
14X130



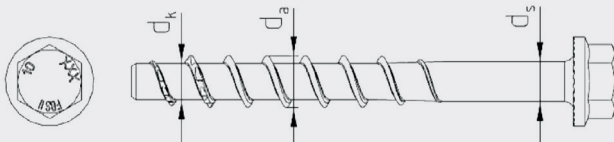
Concrete anchoring bolt for fixing aligner's base plates.

Made of hardened carbon steel in a proportion equal to or greater than 8%, protected against corrosion with cold galvanized treatment.

Materials and screw types			
Type of screw / size	Measures		
Thread outer diameter	d_a	[mm]	16,6
Core diameter	d_k	[mm]	13,3
Shaft diameter	d_s	[mm]	13,7
Material	Hardened carbon steel $A_{5\%} \geq 8\%$		
Coating	Zinc plated		

Code	43339			
Description	Anchor bolt 14x130			
Unit of measure	units			
Weight	Real	0,01 kg	I *Volume	0,01 kg
Material	Carbon hardened steel $A > 8\%$			
Color and finishing	Cold galvanized, silver color			

Hexagon head
with formed washer

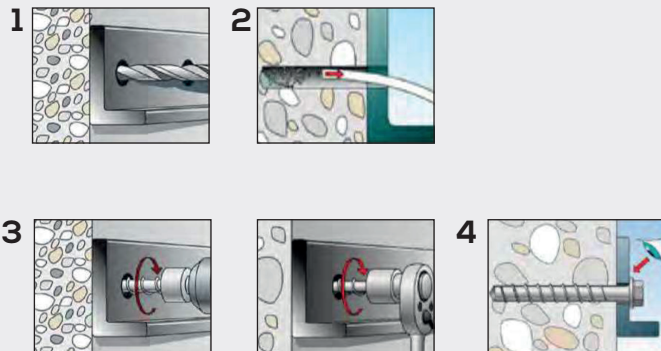


Installation	
Embedded depth	115 mm
Drill diameter	14 mm
Drill depth	130 mm
Impact torque drill	650 Nm

Concrete thickness and spacing	
Concrete minimum thickness	180 mm
Spacing between holes	60 mm
Spacing to edge of concrete	60 mm

Tension load	
In fractured concrete	15,3 kN
In NON fractured concrete	21,6 kN

Installation



Shear load	
In fractured and non fractured concrete	30,5 kN

Concrete characteristics	
Class higher than C20/25 and lower than C50/60	

Packaging	
box (10 units)	